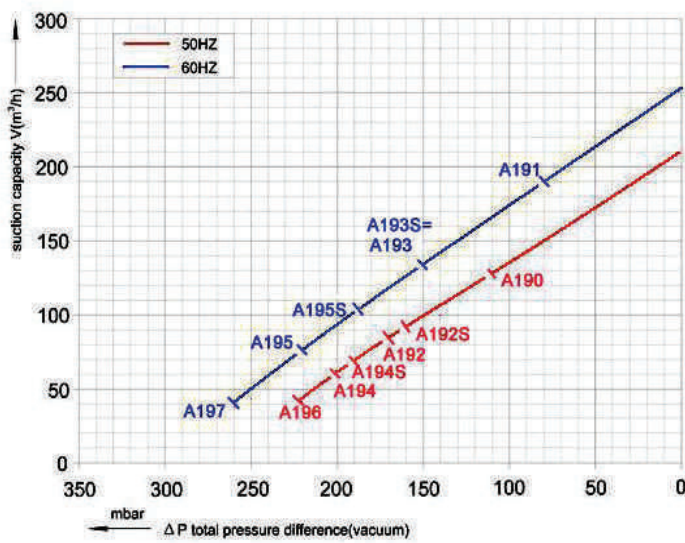




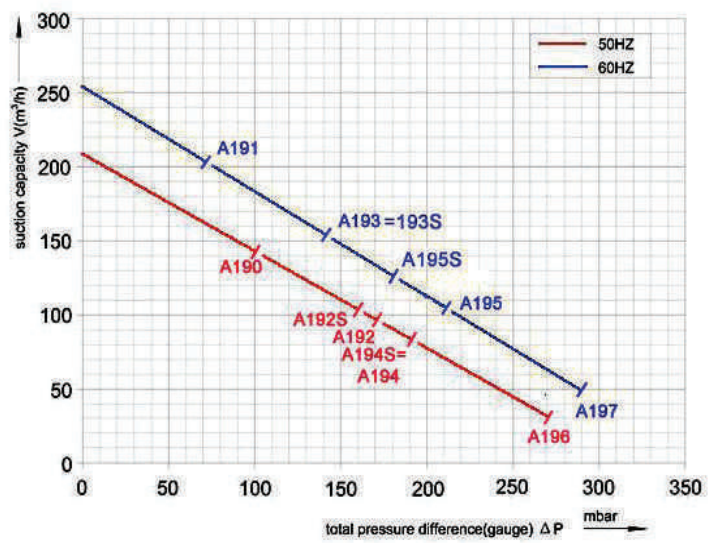
DYNAVAC SINGLE STAGE RING BLOWER

2RB 510 SERIES

Performance curve for vacuum pump



Performance curve for Compressor

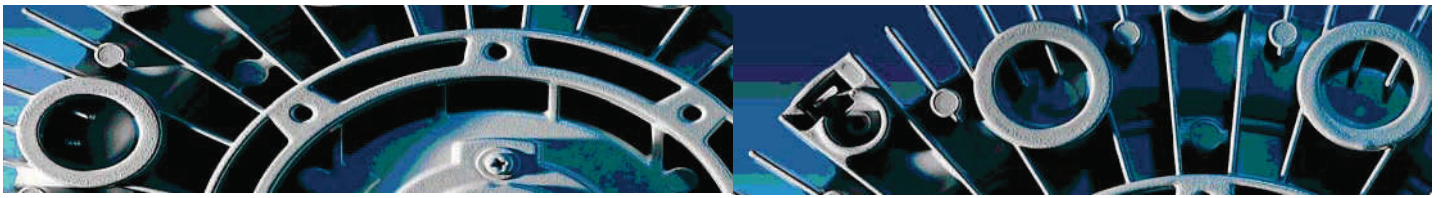


Selection and ordering data

TYPE FOR 2RB 510 SERIES

curve No	MODEL	Single double stage	Freq Hz	Output power Kw	voltage V	Rated current A	Max airflow m3/h	Max static suction mbar	Max static pressure mbar	Noise dB(A)	Dimension L X W X H mm	weight Kg
A190	□ 2RB 510 H06	single	50	0.85	200-240V 345-415Y	4.2/2.4Y	210	-110	100	64	314 X 334 X 337	18
A191			60	0.95	220-275V 380-480Y	4.2/2.3Y	255	-80	70	70		18
A192	□ 2RB 510 H16		50	1.3	200-240V 345-415Y	6.2/3.8Y	210	-170	170	64	314 X 334 X 337	20
A193			60	1.5	220-275V 380-480Y	6.2/4.0Y	255	-150	140	70		20
A194	□ 2RB 510 H26		50	1.6	200-240V 345-415Y	7.2/4.3Y	210	-200	190	64	346 X 334 X 337	21
A195			60	2.1	220-275V 380-480Y	7.2/4.4Y	255	-220	210	70		21
A196	□ 2RB 510 H36		50	2.2	200-240V 345-415Y	9.2/5.6Y	210	-220	270	64	346 X 334 X 337	25
A197			60	2.55	220-275V 380-480Y	10.2/6.0Y	255	-260	290	70		25
A192S	□ 2RB 510 A01	single	50	1.3	200-240V	7.3	210	-160	160	64	314 X 334 X 337	22
A193S			60	1.5	200-240V	7.8	255	-150	140	70		22
A194S	2RB 510 A11		50	1.5	200-240V	9	210	-190	190	64	346 X 334 X 337	24
A195S			60	1.75	200-240V	9.5	255	-190	180	70		24





Dynavac 2RB type can be applied both as vacuum pump and compressor in continuous operation over the total stated performance curve range. The motors are available as standard for the input voltage range of 50 and 60 Hz and for protection category IP 54 as well as approbated for EC and ROHS.

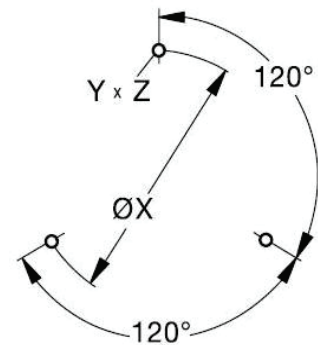
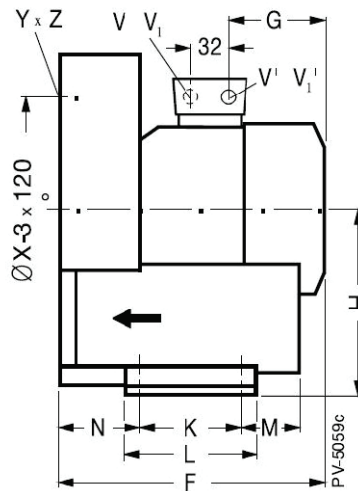
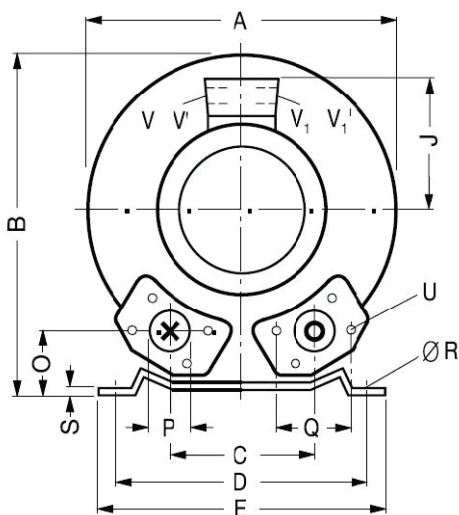
This motors are designed according to the DIN EN 60 034 / IEC 34-1 and temperature class F.

For the three phase machines the tolerances +/- 10% for fixed voltage and for +/- 5% voltage range

The single phase machines are designed with a +/- 5% tolerances. If only 90% of the maximum allowed pressure will be used for continuous operating then the allowed voltage range add to +/- 10%.

The frequency tolerances is maximum +/- 2%.

Installation for dimension



Hole pattern cover

MODEL	phase	Curve	A	B	C	D	E	F	G	H	J	K	L	M	N	O	P	Q	ØR
2RB510 A01	1	A192s/193s	334	337	120	260	295	314	156	175	120	115	155	96	87	48	G2	83	14
A11	1	A194s/195s						346	188		128								
2RB510 H06	3	A190/191						314	153		128								
H16	3	A192/193																	
H26	3	A194/195						346	185										
H36	3	A196/197																	
MODEL	phase	Curve	S	U	V	V'	V1	V1'	Y x Z	X-holes	ØX								
2RB510 A01	1	A192s/193s	4	M8 X 17	M16 X 1.5	M25 X 1.5	M25 X 1.5	M16 X 1.5	M8 x 20	0°/120°/240°	Ø200								
A11	1	A194s/195s																	
2RB510 H06	3	A190/191																	
H16	3	A192/193																	
H26	3	A194/195																	
H36	3	A196/197																	

