



Pool too cold to swim?
TURN UP THE EVOHEAT

CS SERIES
COMMERCIAL SWIMMING POOL HEATERS



CS SERIES

CLASS LEADERS IN COMMERCIAL
PERFORMANCE AND DEPENDABILITY



EVOHEAT'S RANGE OF CS HEAT PUMPS ARE ENGINEERED TO MEET THE DEMANDS OF THE COMMERCIAL POOL INDUSTRY

EvoHeat CS commercial heat pumps are the most efficient way to heat a commercial pool regardless of size or location. EvoHeat offer 7 different CS heaters ranging from 38kW up to 200kW so choosing the heater that best suits your needs is simple. In addition, EvoHeat CS heaters are modular and multiple units can be fitted to heat even the largest indoor or outdoor pool.

- Electric expansion valve technology: provides precise refrigerant control which results in higher C.O.P.'s and improved efficiency. (+10-15%) over other commercial heater brands.
LOWER RUNNING TIMES = LOWER COSTS AND EXTENDED UNIT LIFE
- Double coil titanium heat exchangers: premium performance Sanyo or Copeland compressors and patented super high volume "Maxflo" condensers with "Bluetec" hydrophilic coated fins, EVO's CS Series commercial heat pumps are super efficient in a heavy use commercial situation.
- Precision-built intelligent digital controller and patented microprocessor system: maintain water temperature to within 1/2 degree C of the set point while maintaining optimum heater operating performance. This control system enables you to predefine different temperatures and control parameters under all conditions ensuring lowest possible operating cost
- Dual defrost systems: with 'Thermotec' element and automatic reverse-cycle defrost systems reduce down time resulting in lower running costs.
- Automatic defrost program: featuring dual thermotec and reverse-cycle systems to ensure efficient operation in all conditions. CS offers both heating and cooling with an automatic mode to switch from one to the other according to the set water temperature.
- Corrosion-resistant powder-coated galvanized steel cabinet: the chassis is treated with "Epoxy Plus" powder coating to prevent corrosion. A stainless steel chassis and cabinet are available as an optional upgrade.
- Monobloc design and compact piping system
- Designed for very high flow rates and low pressure drops: this allows our CS units to be directly connected to the filtration circuit and pump. Either way our units have much lower resistance which means lower pumping costs even if connected to a pumped side stream configuration.



MODEL	CS38	CS47	CS57
Heat output at 24 deg air 26 deg water (kW)	38	47	57
Heat output at 15 deg air 26 deg water (kW)	31	40	48
Cooling output at 35 deg air 30 deg water (kW)	21.6	28.2	36
Power input at 24 deg air (kW)	7.04	8.74	10.75
Power supply	415/3/50	415/3/50	415/3/50
C.O.P. at 24 deg air (380/415 volts 3 phase)	5.4	5.38	5.3
*Max running current AMPS	13.8	19.12	25.1
Compressor type	Scroll	Scroll	Scroll
Refrigerant	R410A	R410A	R410A
PVC water connection(mm)	50	50	50
Water flow rate(L/min)	200	250	325
Noise dB(A) at 2M	61	61	61
Shipping dimensions LxWxH (mm)	1570/815/1270	1570/815/1270	1570/815/1270
Unit dimensions LxWxH (mm)	1490/735/1130	1490/735/1130	1490/735/1130
Weight packed/unpacked (kg)	270/244	300/270	300/270

*Running current max: 43°C ambient heat /29°C in cooling mode

PERFORMANCE WHERE IT COUNTS!

EvoHeat guarantees stable performance from as low as -7°C

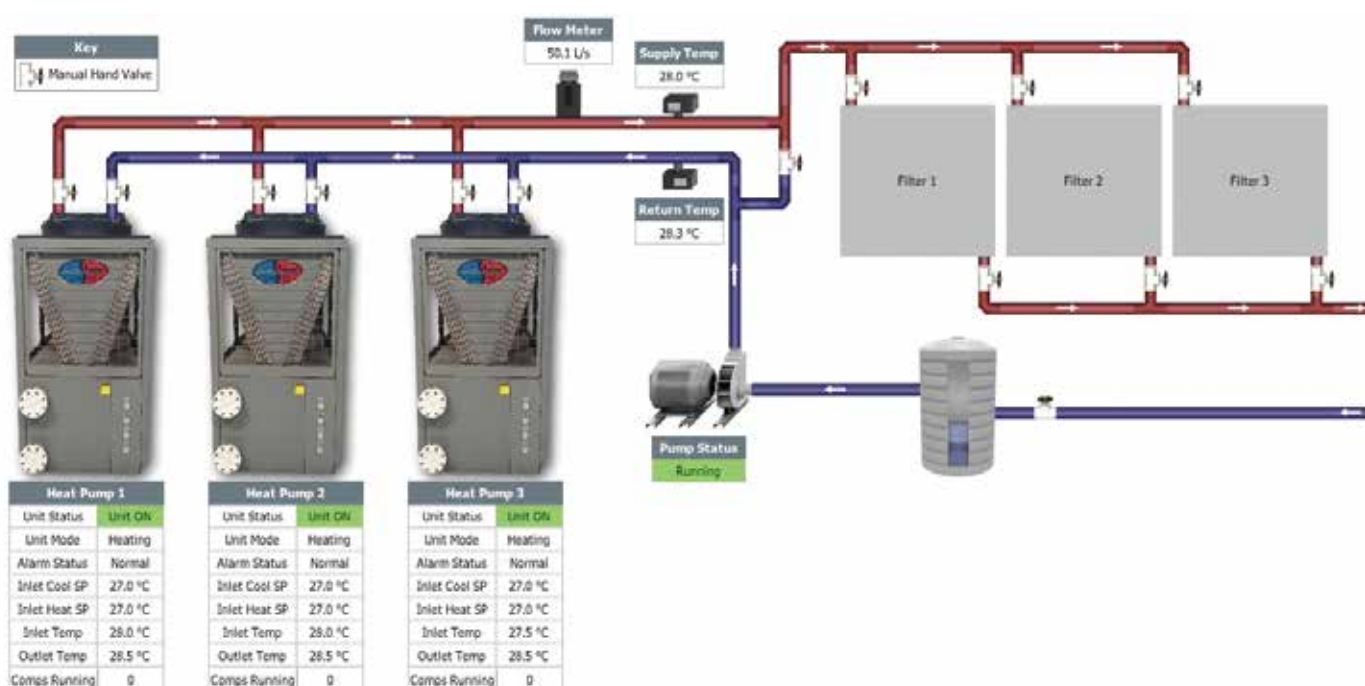
EVO'S CUSTOM MANUFACTURING DIVISION CAN BUILD SYSTEMS UP TO 3600KW HEATING CAPACITY

EvoHeat pumps are installed at commercial, community and domestic locations across Australia and have a reputation for value, reliability and ease of operation second to none. We look forward to achieving optimum performance outcomes for our clients. For further information, contact your local EVO agent or visit www.evoheat.com.au

EVO ENERGY TECHNOLOGIES MONITORING AND CONTROLS PLATFORM

Install the latest in Swimming Centre Monitoring and Control Systems and make your heating solution perform at its best. Track and control system performance and costs with EVO's integrated dashboards anywhere, anytime.

CONTACT US NOW FOR AN OBLIGATION FREE SYSTEM EVALUATION!



CS-GEN2 SERIES

CLASS LEADERS IN COMMERCIAL
PERFORMANCE AND DEPENDABILITY



EVOHEAT'S CS-GEN2 RANGE OFFERS SUPERIOR TECHNOLOGY, SAVING YOU MONEY AND CARBON EMISSIONS

- Unit size: our CS-GEN2 heat pumps are designed with the smallest footprint and size in mind. Compare the unit footprint of our CS-GEN2 with other units on the market.
- Build Quality: manufactured with the best HVAC components currently available.
- C.O.P. Efficiency: CS-GEN2 heaters have a C.O.P. that far exceeds other units. EVO CS200-GEN2 swimming pool heat pumps have a C.O.P. of 5.79 at 24 degree air and due to the EEV system is able to provide maximum performance in varying real world temperature changes. A TX valve simply cannot match.
- V Evaporator: another space saving innovation which also assists with defrost performance and keeping the coil cleaner. As the fins are angled water does not pool on the top surface as easily leading to fouling. The fin angle also provides a small efficiency boost as the air direction change is less than 90 degrees thus requiring less work from the fans to pull the air through the system.
- Refrigerant: we use R410a refrigerant which is superior to R407c. R410a is the next evolution in heat pump system design and R407c is only used on our lower performance budget range.
- Electric Expansion Valve (EEV): our CS-GEN2 models utilize EEV technology which is the absolute latest and the best possible refrigeration control system available on the market today. TX valves are a mechanical control device and fairly old technology and cannot compete with the efficiency of EEV. EEV can be up to 20% higher efficiency compared to a TX valve system.
- Dual Defrost: our heat pumps come supplied with 2 defrost systems. Reverse cycle and Thermotec Element. Evo does not endorse the use of hot gas bypass as it generally provides an inferior result over a longer period of time than reverse cycle. Our Thermotec element defrost also assist the main defrost system by providing low grade heat to the base of the condenser thus slowing the buildup of ice from the bottom of the unit up (which is where it commonly appears first due to the water pooling/running down the fins). The Thermotec element ensures our Evo heat pumps are defrosting less and heating more often thus maximizing the heating capacity in colder weather when its needed.
- High Flow/Low Pressure Drop: our CS units are designed for very high flow rates and low pressure drop. This allows our CS units to be directly connected to the filtration circuit and pump. Either way our units have much lower resistance which means lower pumping costs even if connected to a pumped sidestream configuration.
- Blygold Evaporator Coating: Blygold is considered to be the premium method of corrosion coating available on the market today provided by the leading corrosion coatings technology supplier worldwide. Blygold is an optional extra available.
- 316 Stainless Steel Cabinet. Evo recommends the units are supplied in full 316 Stainless Steel to ensure long term corrosion resistance.

- Night Mode Fans: CS-GEN2 heat pumps have 2 speed fans as a standard feature. The fans are able to operate on a lower RPM on a timer or temperature basis. This allows the units, which are already very quiet, to become even quieter if required.
- New tariff + timer system: available for the CS-GEN2 the new tariff + timer system allows you to program 4 time zones, and select 2 of these time zones each day. This allows you to run the heater during off peak electricity periods, and on weekends (which are usually always off peak) to run the heater during the day when its warmer and more efficient.

CS-GEN2 IS AVAILABLE IN 95,120,145 AND 200kW MODELS

MODEL	GEN2 95	GEN2 120	GEN2 145	GEN2 200
Heat output at 24 deg air 26 deg water (kW)	95	120	145	190
Heat output at 15 deg air 26 deg water (kW)	80	103	120	160
Cooling output at 35 deg air 30 deg water (kW)	64	80	97	119
Power input at 24 deg air (kW)	16.1	21	25.5	32.8
Power supply	415/3/50	415/3/50	415/3/50	415/3/50
C.O.P. at 24 deg air (380/415 volts 3 phase)	5.9	5.7	5.69	5.79
*Max running current AMPS	40	46	60	80.1
Compressor type	Scroll	Scroll	Scroll	Scroll
Refrigerant	R410A	R410A	R410A	R410A
PVC water connection(mm)	DN 110	DN 110	DN 110	DN 110
Water flow rate(L/min)	483	583	1033	1000
Noise dB(A) at 1M	61	62	63	67
Shipping dimensions LxWxH (mm)	2240/1200/ 2050	2240/1200/ 2050	2280/1180/ 2220	2280/1180/ 2220
Unit dimensions LxWxH (mm)	2180/1080/ 1930	2180/1080/ 1930	2180/1080/ 2060	2180/1080/ 2060
Weight packed/unpacked (kg)	632/602	694/648	709/664	1140/1100

*Running current max: 43°C ambient heat /29°C in cooling mode

PERFORMANCE WHERE IT COUNTS!

EvoHeat guarantees stable performance from as low as -7°C





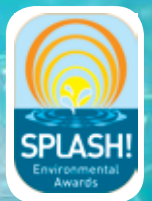
THE SPECIALISTS IN POOL AND SPA HEATING

EvoHeat are 100% Australian owned and operated company and are the industry specialists in pool and spa heat pumps. For over a decade we've been building a solid reputation for pool and spa heating products that are renowned for reducing your energy bills and delivering reliability. Our exclusive pool heaters are durable and utilise cutting edge components sourced from leading brand manufacturers around the world. Unlike other suppliers, EvoHeat only specialise in heat pump technology and are constantly developing and improving our heating applications to ensure we offer you the best in the market.

CS SERIES WARRANTY

For further peace of mind the EvoHeat CS Series heat pumps come with an industry leading warranty:

- 15 years on titanium heat exchanger
- 5 years on compressor
- 2 years on parts
- 1 year on labour



EVO INDUSTRIES AUSTRALIA PTY LTD

P: 1300 859 933 FAX: 07 3162 2041

E: sales@evoheat.com.au

www.evoheat.com.au